



ASX RELEASE

4 April 2022

RED FOX COMMENCES 2022 FIELD WORK

Chase Mining Corporation Limited (ASX: CML, "Chase Mining" or "Company") provides the following update on Red Fox Resources Pty Limited ("Red Fox"), in which Chase Mining holds 40%.

Red Fox is pleased to announce that it has commenced its 2022 field season with work at the **Eveleigh Zinc-Lead-Silver** and **Butchers Bore Gold** Projects.

Field work at **Eveleigh** (EPM26601) in the Georgetown district of northeast Queensland consists of mapping and geochemical sampling. The mapping is being conducted to define and extend the lode horizon and pXRF geochemistry aims to extend the known mineralised zones to the east and west as well as refine drill targets using multi-element geochemistry.

Red Fox is proposing to complete a diamond drilling program consisting of 6 holes for 810m at the Eveleigh Zinc-Lead-Silver Project in mid-2022. The drilling is supported by a \$200,000 government grant, under the Collaborative Exploration Initiative (CEI). The purpose of this drilling will be to assess the potential for BHT (Broken Hill Type) mineralisation, which has not been confirmed at this project (see announcement 17 February 2022).

Field work at **Butchers Bore** (EPM 26397) in the Cloncurry district of northwest Queensland consists of further sampling and mapping at the GW Gossans prospect. The program is designed to refine and extend the anomalous zones identified in the 2021 field campaign (see announcement 3 February 2022).

Attached is a copy of the Red Fox announcement, which can also be found on their website together with further information on the company at <http://www.redfoxresources.net.au/>

This announcement has been authorised for release to the ASX by the CML Board of Directors.

For further information, please contact:

Leon Pretorius
Chairman and CEO
Mobile: 0419 702 616
Email: leon@chasemining.com.au



CHASE MINING CORPORATION LIMITED

ABN 12 118 788 846

Level 8, 46 Edward Street, Brisbane QLD 4000 PO Box
15505, City East QLD 4002
0439 310 818 | 0419 702 616
<https://www.chasemining.com.au>



4 April 2022

Red Fox commences 2022 field work at Eveleigh & Butchers Bore Projects

Red Fox is pleased to announce that it has commenced its 2022 field season with work at the **Eveleigh Zinc-Lead-Silver** and **Butchers Bore Gold** Projects.

Field work at **Eveleigh** (EPM26601) in the Georgetown district of northeast Queensland consists of mapping and geochemical sampling. The mapping is being conducted to define and extend the lode horizon and pXRF geochemistry aims to extend the known mineralised zones to the east and west as well as refine drill targets using multi-element geochemistry.

Red Fox is proposing to complete a diamond drilling program consisting of 6 holes for 810m at the Eveleigh Zinc-Lead-Silver Project in mid-2022. The drilling is supported by a \$200,000 government grant, under the Collaborative Exploration Initiative (CEI). The purpose of this drilling will be to assess the potential for BHT (Broken Hill Type) mineralisation, which has not been confirmed at this project (see announcement 17 February 2022).

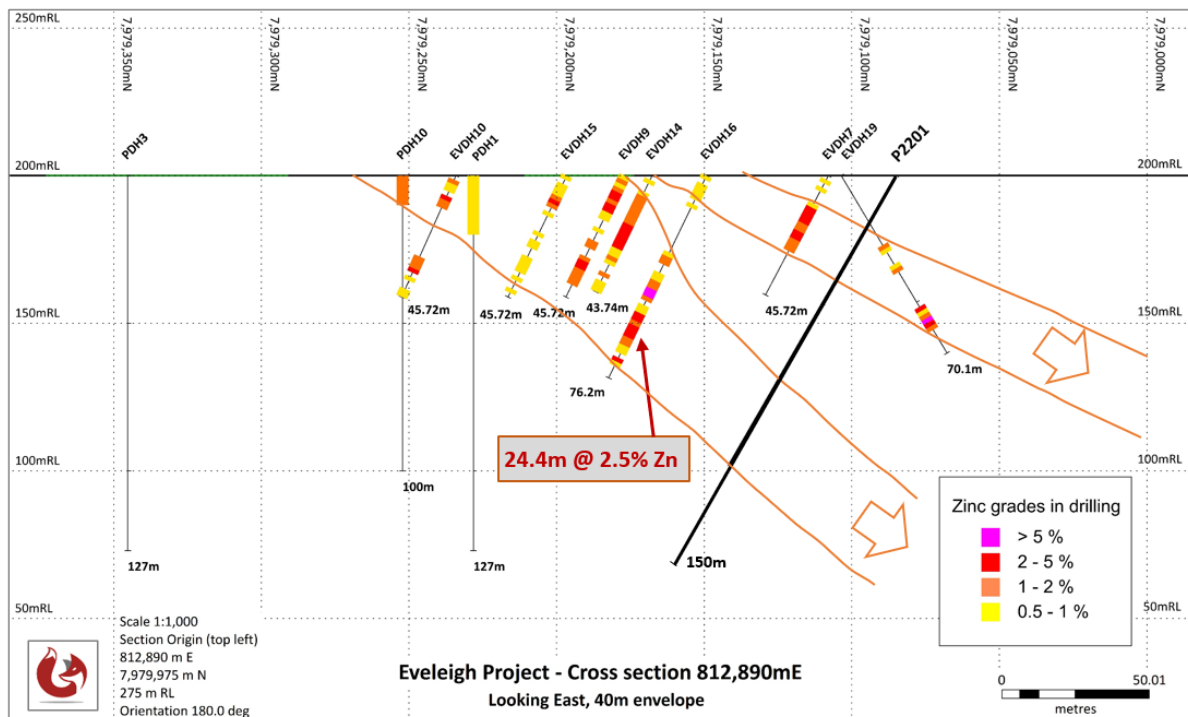


Figure 1: An Eveleigh drill section showing historical drill holes and one of the proposed Red Fox drill holes (P2201)

Field work at **Butchers Bore** (EPM 26397) in the Cloncurry district of northwest Queensland consists of further sampling and mapping at the GW Gossans prospect. The program is designed to refine and extend the anomalous zones identified in the 2021 field campaign (see announcement 3 February 2022).

Highlights from the 2021 work included:

- Up to **3.86g/t Au** in rock chip samples
- Soil anomaly defined over **700 metres**
- Soil anomalies **open to south, west and east**

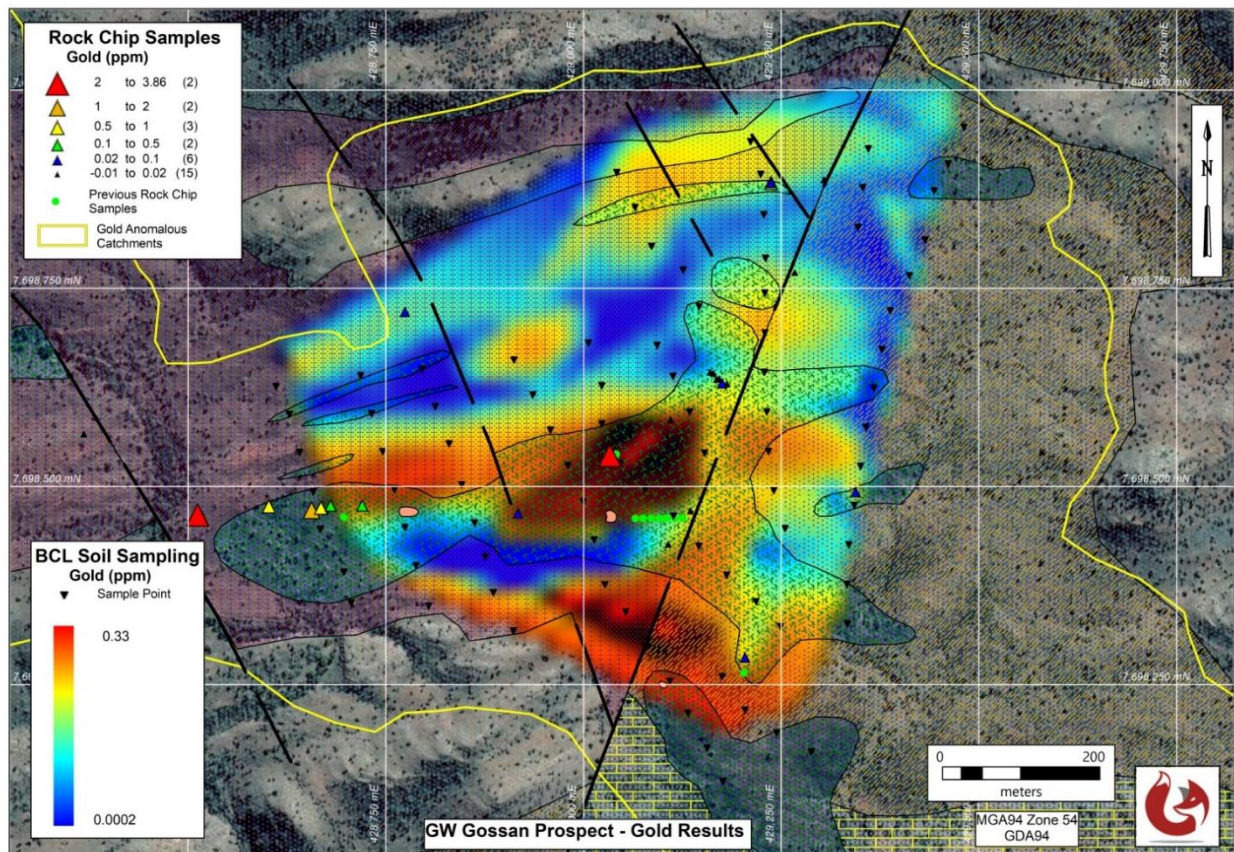


Figure 2: GW Gossan prospect (Butchers Bore Gold) showing 2021 field program results - gold results from (bulk cyanide leach) soil sampling (gridded) and gold values in rock chip sampling.

Results of the two field programs are expected to be received in April.

Competent Persons Statement – Exploration Results: The information in this document that relates to Exploration Results is based on and fairly represents information and supporting documentation compiled by Ms Juli Hugenholtz, a Competent Person who is a Member of The Australian Institute of Geoscientists. Ms Hugenholtz is the Managing Director and an employee of Red Fox Resources Pty Ltd and is a substantial shareholder of the Company.

Ms Hugenholtz has sufficient experience relevant to the style of mineralisation and type of deposit under consideration and to the activity being undertaken to qualify as a Competent Person as defined in the 2012 Edition of the 'Australasian Code for Reporting of Exploration Results, Mineral Resources and Ore Reserves'. Ms Hugenholtz consents to the inclusion in the report of the matters based on this information and the Company confirms that the form and context in which the Competent Person's findings are presented have not been materially modified from the earlier announcements, all of which are available to view on www.redfoxresources.net.au.

Previous Releases

Information on historical exploration results and Red Fox' activities with respect to Eveleigh (EPM 26601) and Butchers Bore (EPM 26397) is contained in the following Red Fox announcements:

- Government Grant awarded to fund drilling at the Eveleigh Zn and Ernest Henry West Cu-Au Projects [RF_20220217_EHW-EVE_CEI-grant.pdf \(redfoxresources.net.au\)](#)
- Red Fox completes preliminary field assessment Butchers Bore - EPM 26397 [RF_20220203_BTBTB_Field_results_final.pdf \(redfoxresources.net.au\)](#)

The Company confirms that it is not aware of any new information or data that materially affects the information in the original market announcement, and that the form and context in which the Competent Persons findings are presented have not been materially modified from the original announcements.